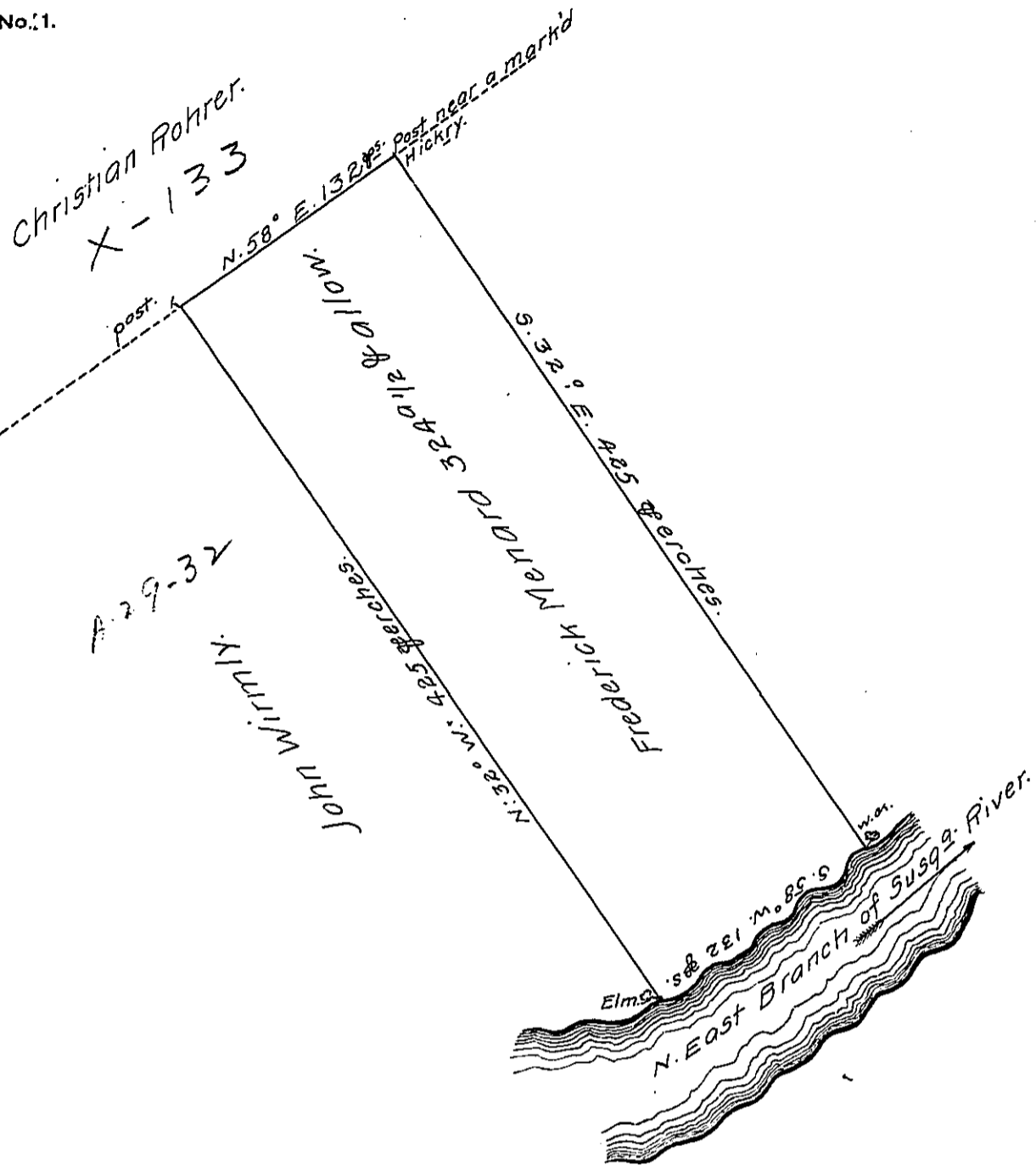


FORM No. 1.



A Draught of a Tract of land called _____ situate on the East Side of the North East branch of Susquehanna River Between the mouth of Wesangking- and Minami- adjoining land surveyed for John Wirtmly in the County of Northumberland, containing three hundred & twenty four Acres and a half Acre besides the usual allowance of 6 & Cent. for Roads & ^{to} surveyed for Frederick Menard the 27th day of September, 1773. In pursuance of an order dated the 3^d Day of April, 1769 Number 1746.

To John Lukens, Esq^r,
Surveyor Gen^l.

by Chas Stewart, Dep^y Sur^v.

IN TESTIMONY that the above is a copy of the original remaining on file in the Department of Internal Affairs of Pennsylvania, made conformably to an Act of Assembly approved the 16th day of February, 1833, I have hereunto set my Hand and caused the Seal of said Department to be affixed at Harrisburg, this ninth day of February, 1911.

Henry Houck
Secretary of Internal Affairs.